

Landslide susceptibility mapping using frequency ratio method along the Bhaderwah-Bani Road, Jammu and Kashmir, India

Yudhbir Singh¹, Mehreen Liaqat², Sumit Johar^{1*}, Shifali Chib¹, and Gaurav Singh Parihar¹

¹Department of Geology, University of Jammu, Jammu-180006, India

²Department of Geography, Jamia Millia Islamia, New Delhi-110025, India

*Email Address: sumitjohar1996@gmail.com

ABSTRACT

This study outlines a method for landslide susceptibility mapping utilizing remote sensing and geographic information systems (GIS). Since the terrain from Bhaderwah to Bani in J&K is prone to landslide threats, the study has been conducted there. The purpose of the current study is to determine and identify the significant terrain elements causing landslides. Nine contributing factors on landslides were taken into account throughout the analysis. Thematic data layers are created in the GIS domain based on local events. Topographic maps, satellite images, on-site observations and publicly available published maps are used to gather the landscape data. To determine the standardized scores of criteria expressing their factor of importance for a given decision problem in terms of thematic parameters, categories, and their normalized weights the Frequency ratio (FR) method is used to digitize these maps along with tabular data and to create a GIS database. A particular landslide susceptibility zonation (LSZ) map was created on a GIS platform by statistically combining weightages from several thematic maps. Using FR, the LSZ map was divided into five separate susceptibility zones. According to the study's finding, 8% of the area is in a very high susceptibility zone, with the remaining 12%, 15%, 23%, and 42% falling into high, moderate, low, and very low susceptibility zones, respectively. The outcomes of the current study might aid policy and decision makers in moving forward with regional development initiatives including land use planning.

Keywords: Landslide, Hazard zonation, NH-244, frequency ratio, Remote Sensing, GIS

INTRODUCTION

Landslide is one of the most common natural hazards that has caused massive damage to infrastructure and property as well as loss of lives around the world. India is prone to variety of natural and human induced disasters such as landslides, floods, earthquakes, fires, windstorms hailstorms. Among various natural hazards, landslide is very common in hilly region of India. Landslide is the most harmful geological hazard in India causing significant number of fatalities, economic losses and is one of the major restraints in development (Petley et al., 2008). Landslide appraisal and hazard zonation are necessary for systematic landslide mitigation and management. Numerous methods for landslide appraisal and zonation have been developed during the last few decades. The correct assessment of landslide hazard of an area involves both intrinsic and extrinsic factors (Siddle et al., 1991; Dai et al., 2001). Since most studies for the assessment of hazard of an area involves only intrinsic factors, because it is difficult to obtain the data on extrinsic factors. Therefore, assessment of an area in the context of landslide hazard where extrinsic factors are disregarded is termed as landslide susceptibility mapping (Dai et al., 2001; Guzzetti et al., 2005). The landslide study has taken a great stride in modern times due to advancement

and development of spatial information technology. The easy availability of high-resolution satellite imageries and application of geographic information system (GIS) has helped in managing and manipulating of the spatial data with suitable models for mapping landslide susceptibility for large areas (Carrara et al., 1991; Van Westen et al., 2006).

A number of schemes are in vogue in which GIS technique is used for landslide susceptibility zonation. The qualitative method normally incorporates landslide susceptibility based on professional acquaintance and is useful for regional assessment (Aleotti and Chowdhury, 1999). The quantitative analysis of landslide includes statistical methods and can be grouped into multivariate and bivariate methods. In the multivariate method, the relative contribution of each factor layer to the total landslide susceptibility map is considered, while in the bivariate method the contribution of each factor is compared with landslide inventory to find out the relative importance. The overall methodology used for landslide susceptibility mapping is generally based on the principle that future landslide will occur in areas of similar conditions where past landslides have occurred (Varnes, 1984; Guzzetti et al., 2003). In this study, bivariate statistical method was used to prepare the landslide susceptibility map. Frequency ratio is one of the bivariate statistical

approaches of landslide susceptibility assessment based on the relationship between instability factors and the past and present distribution of landslides (Lee, 2005). The frequency ratio approach is a simple probabilistic form based on the observed relationships between the causative factors and distribution of landslides. The ratio value greater than unity represents a strong correlation for landslide and ratio value less than unity represent the lesser chance of landslide from an influencing factor (Lee and Pradhan, 2006). This method has been successfully used by various workers for landslide susceptibility mapping (Lee and Talib, 2005; Lee and Pradhan, 2006, 2007). In the present study frequency ratio model in GIS environment was used in which six intrinsic causative factors i.e., aspect, relief, curvature, slope, hill shade, and geology were taken into account.

In Jammu region most of the landslide's studies took place along national highways, because road network is considered to be the index of the development of the country and keeping in view the importance of National Highways (NH-44) mostly studies are concentrated along the highways (Andrabi, 2002; Bhat et al., 2002; Singh, 2006; Singh and Bhat, 2010; 2011; Singh et al., 2012, 2014). In the history of Jammu region, one of the deadliest landslide events was observed in Sadal Village in Panchari area of Udhampur district during the year 2014. This landslide devastated the entire Saddal habitation in the early morning of September 6, 2014 in which all the residents except those who were not in the village died. This landslide destroyed 45 houses, killing 41 people and more than 500 domestic animals perished. Besides this, number of landslides took place in and around Jammu region. These events often initiate especially during the onset of rainy season. A detailed knowledge about the expected frequency, character, pattern and magnitude of slope failures in an area can lead to successful mitigation of landslide hazards. For conducting quicker and safer mitigation programs over a specific area identification of landslide-prone regions is essential.

STUDY AREA

The present study is confined between Bhaderwah (latitudes- N32°60' and longitudes-E75°40') and Bani (latitudes-N 32°40' and longitudes- E 75°60') sector of the National highway-244 (NH-244) which falls in the Lesser Himalayan tectonic zone of the northwestern Himalaya (Figs. 1 and 2). The prominent structural unit falling in the study area is the Panjal Thrust (Fuchs, 1975; Gansser, 1981; Thakur, 1981). The oldest rocks exposed along the highway in this area are represented by the Bhaderwah Group of Precambrian age composed of grey phyllitic slates, calcareous slates and talc bearing slates, overlain by the Dalhousie Formation (Salkhala Formation)

comprising of augen gneisses and banded gneisses (McMohan, 1885). The Dalhousie Formation is overlain by the Sincha Formation which consists of bluish-grey sandy dolomite and pinkish limestone. The youngest rocks exposed in the study area are intrusive granites (Kaplas Granite). Seismically the area has been classified as seismic zone-IV and V. The area, in general, enjoys temperate to sub-tropical type of climate.

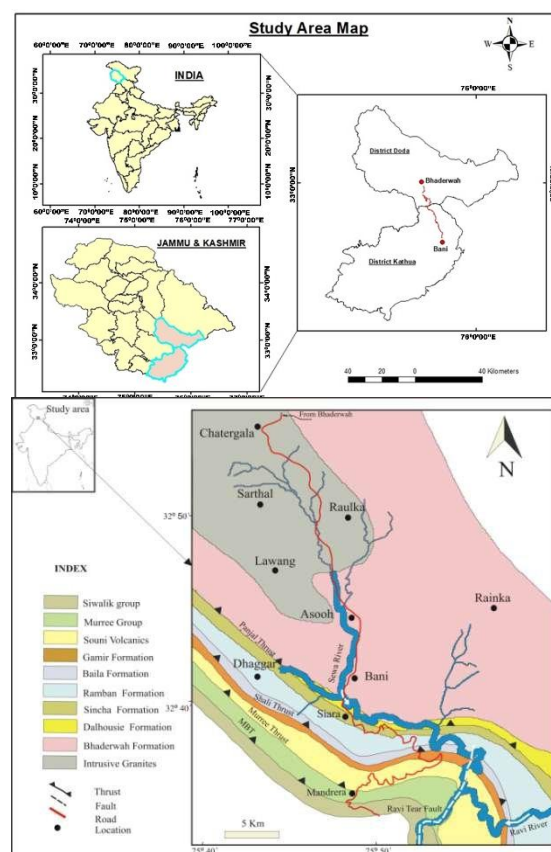


Fig. 2 Geological map of the study area (modified after Choudhary, 2006)

MATERIALS AND METHODS

The study is focused on different landslide causative factors, determination of their weights, preparation and analysis of the landslide susceptibility model while using Frequency ratio model and GIS-based statistical methods. Nine landslide conditioning characteristics, which are slope gradient, slope aspect, slope curvature, hill shade, relief, lithology, distance to road, distance to streams, and land use land cover (LULC) were taken into consideration for the study (Fig. 3). In the beginning, polygons are made to depict the sites of landslides in order to create a landslide inventory. Then, for each element taken into account in the research, thematic layers were produced, which were then resampled into raster format with uniform pixel size, categorized based on particular themes,

and classed appropriately. The landslide inventory is used to determine the importance of each element. The unique sequence of various spatial and statistical datasets was used to develop a susceptibility map which characterizes the whole study area into several susceptible classes such as: very high, high, moderate, low and very low (Soeters and van Westen, 1996; Brabb and Best, 1999).

LANDSLIDE SUSCEPTIBILITY ASSESSMENT USING FREQUENCY RATIO METHOD

From the correlation between places where landslides had not happened and the landslide-related variables, it was possible to infer the link between the landslide occurrence area and the landslide-related factors. One of the probability models, the frequency ratio, was utilized to quantify this distinction. The frequency ratio is the ratio of the likelihood that an event will occur to the likelihood that it won't happen given certain features (Bonham-Carter, 1994). The combination of multiple causal factors depending on their weight, which is estimated by various statistical methodologies, is the essential part of the assessment of landslide susceptibility. Due to its mathematical simplicity and relatively short evaluation time, frequency ratio (FR) was chosen for this study as the primary analysis for a preliminary probabilistic evaluation. When this ratio exceeds 1, there is a strong correlation between a landslide and the range or kind of the component. If the ratio is less than 1, there is a slight relationship between the range or type of the component and the likelihood of a landslide (Girma et al., 2015). The formula for calculating frequency ratios is as follows:

$$FR = \frac{Nlp / N}{Nlpi / Ni}$$

where,

Nlp = the number of pixels in each landslide conditioning factor class;

N = the total number of pixels in the research region;

Nl = total number of landslide pixels in the study region and

$Nlpi$ = number of landslide pixels in each landslide conditioning factor class.

LANDSLIDE INVENTORY

The landslide inventory provides information regarding the types of landslides, their failure processes, their locations, their triggers, as well as their frequency of occurrence, density, and damage (Fig. 4) (Van Westen et al., 2008). A few places were verified on the ground. For the purpose

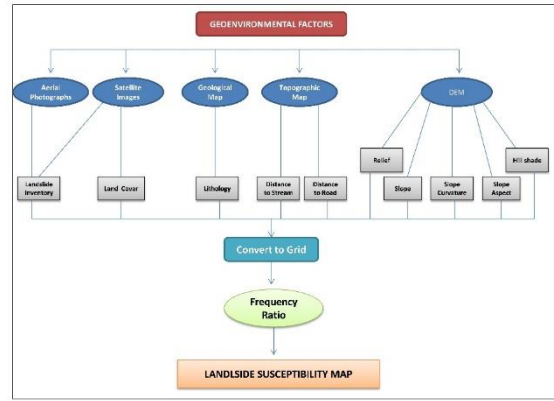


Fig. 3 Flowchart of the methodology used in the study

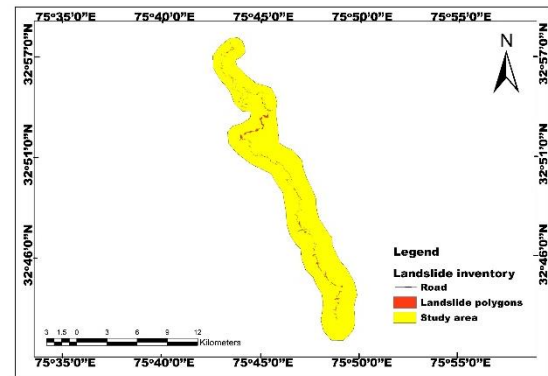


Fig. 4 Landslide inventory of the study area (Courtesy: Google earth pro).

of creating a landslide inventory map, 134 landslide locations were found and mapped overall in this study. Numerous studies have demonstrated that steeper slopes are more likely to have landslides (Poudel et al., 2016). Due to the varied wetness of the slope side, it is also one of the most important elements influencing the occurrences of landslides (Pham et al., 2018). Landslides may be influenced by aspect-related elements such as exposure to sunshine, drying winds, rainfall (degree of saturation), and discontinuities (Dai et al., 2001; Cevik and Topal, 2003). The acceleration or



Fig. 5 Field photographs showing the various types of slope failures in the study area.

slowdown of flow across a surface is influenced by curvature (Buckley, 2010). Some of the field photographs of the study area are shown in Figure 5. **RESULTS AND DISCUSSION**

Utilizing the frequency ratio approach, the frequency ratio values for the various conditioning factors is given in Table 1. The examination of the current study's findings provides crucial new information about how different elements affect landslides vulnerability. In terms of slope sub-categories, the range of 45°-55° shows the highest frequency ratio value (1.146), indicating the likelihood of landslides on these steep slopes. The slope sub-categories 20°-30°, 30°-45°, 55°-65°, also shows a frequency ratio greater than 1 (1.096, 1.105 and 1.086), which indicates a considerable probability of landslide happening in the areas with these slope sub categories. Furthermore, the frequency ratios for the slope sub-categories 0°-10°, 10°-20° and >65° are all less than 1 (0.531, 0.792 and 0.974), indicating minimal likelihood of landslides (Fig. 6a). The impact of aspect is higher in the northeast, northwest, north and east directions with FR values 1.269, 1.261, 1.196 and 1.095 (Fig. 6b). Areas with concave curvature are more susceptible to landslides with FR value of 1.306 (Fig. 6c). According to the hill shade results, the hill shade ranges (205-254, 117-161 and 0-69) have a stronger effect on the occurrence of landslides with FR of 1.102, 1.053 and 1.035 than the other hill shade ranges (Fig. 6d). According to the study's relief component, regions with high relief (2971-3415 m) have a bigger impact on the likelihood of landslides with a FR of 2.994. Areas with low relief, on the other hand, are less susceptible to landslides (Fig. 6e). Another affecting factor for landslides is the geological set-up of the area. The whole area is represented by three different rock formations. The effect of landslide is higher for the Salkhala Formation which has FR value of 1.15, followed by the Vaikrita Formation with FR value of 1.022 and lowest in the Kaplas Granite with FR value of 0.893 (Fig. 6f). Similarly, the study area's distance to stream map indicates that landslides are more common in the locations that are almost nearest to the river (100-200 m) with a FR of 5.333 (Fig. 6g). Landslides are more likely to occur in places covered by snow with a FR of 1.594, based on calculations from the land use and land cover map (Fig. 6h). According to the study area's distance to

road map, the closest distance from a road (0–150 m) with a frequency ratio value of 17.026 has the biggest influence on the likelihood of landslides (Fig. 6i). Anthropogenic activities and haphazard toe cutting are two possible causes of this, which result in further instability.

Using the data of Table 1, the values for each factor were used to prepare the Landslide susceptibility index (LSI) map using raster calculator. LSI is classified into specific classes

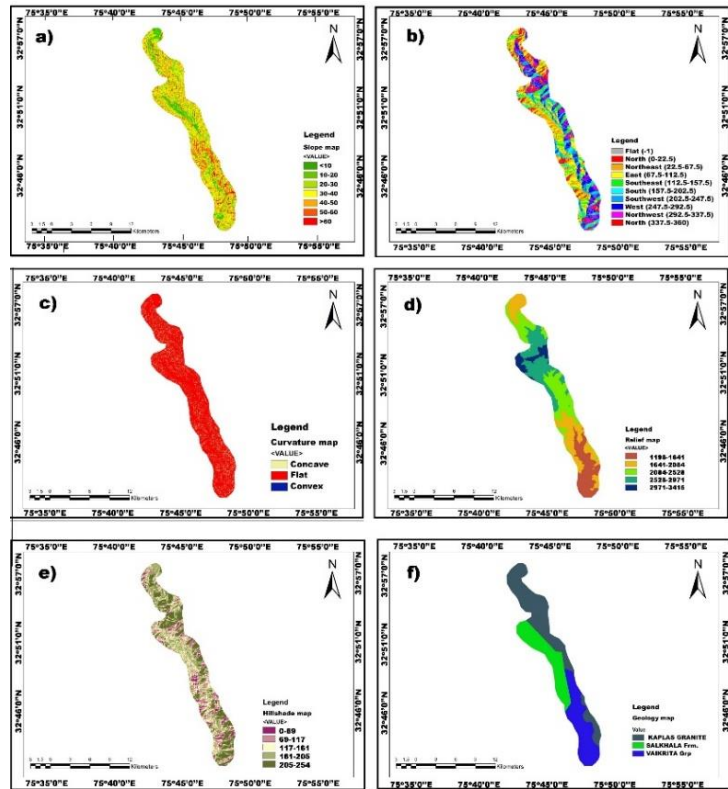


Fig. 6(a-f) Conditioning factors a) Slope map and b) Aspect map; c) Curvature map; d) Hill shade map; e) Relief map, and f) Lithology map

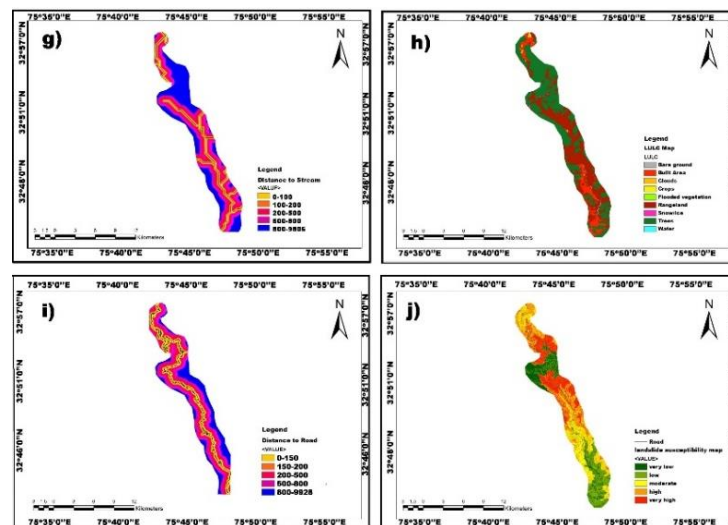


Fig. 6(g-j) Conditioning factors g) Distance to streams; h) LULC; i) Distance to road; and j) landslide susceptibility zonation map.

road map, the closest distance from a road (0–150 m) with a frequency ratio value of 17.026 has the biggest influence on the likelihood of landslides (Fig. 6i). Anthropogenic activities and haphazard toe cutting are two possible causes of this, which result in further instability.

defining susceptibility level to prepare the Landslide Susceptibility Map (Fig. 6j).

$$LSM_{Fr} = \text{Total Sum of (weight* factor map)}$$

The LSM illustrates the landslide susceptible zones which are divided into five classes i.e., very low, low, moderate, high, and very high. The area covered by each class of landslide susceptibility map using FR method is shown as Table 2. It demonstrates that among total land sliding area of 103.41 sq. km, the landslide probable area under classification very high and high are 8.1 sq. km and 11.52 sq. km respectively. The comparison can be interpreted by change in area in different classes of landslide susceptible zone. The graph showing the ranking



Fig. 7 Graph showing the ranking criteria and weightage to each factor

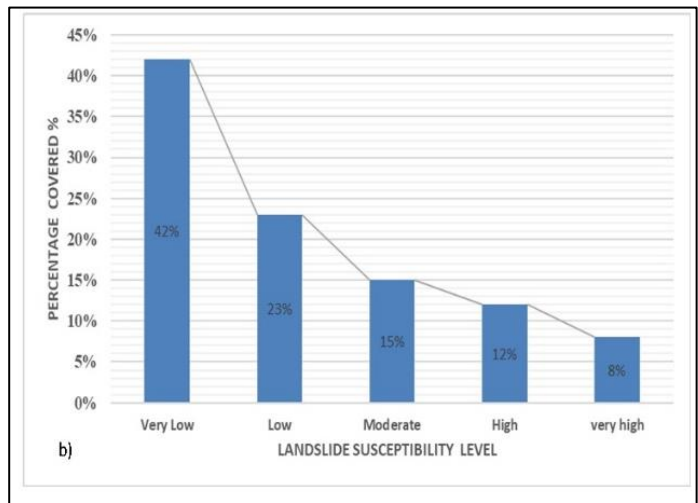
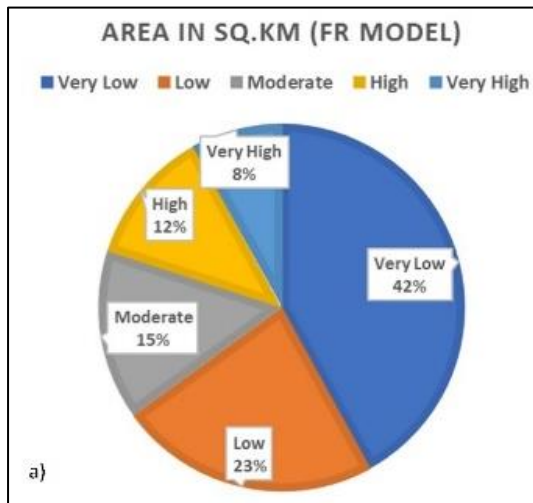


Fig. 8 a) Percentage distribution of landslide susceptibility zonation using FR and b) Relationship between percentage of areas of landslide and susceptibility level.

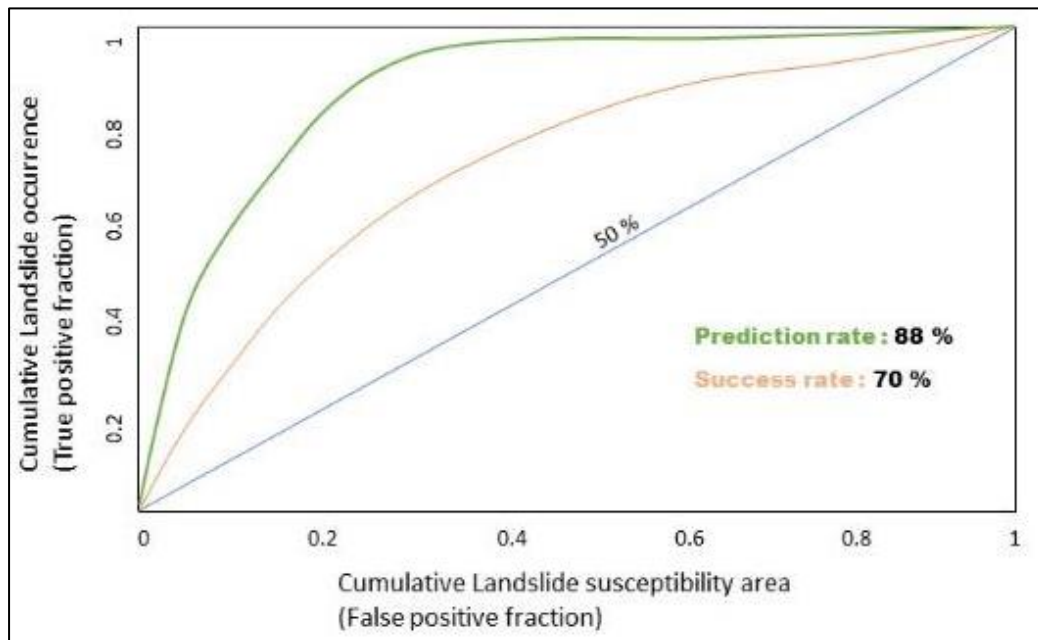


Fig. 9 Analysis of ROC curve for the landslide susceptibility map.

criteria and weightage to each factor is shown in Figure 7, which indicates that the distance to road and distance to streams are the dominant factors

affecting the stability of slope. The pie chart (Fig. 8a) describes the area of different classes in percentage in which the landslide susceptible zone

for very high and high classes are 8 and 12% respectively. Most of the area falls in very low susceptible zone. The relationship between landslide occurrence and each susceptibility classes as assessed by Frequency ratio method has been

plotted and presented in Figure 8b. The receiver operative characteristic (ROC) curve for the validation of the results is shown in Figure 9.

Table 1. The Frequency Ratio (FR) values obtained for slope, Aspect, Curvature, Relief, Hill shade and Geology parameters

S. No.	Parameters	Classes	Class Pixels	% Class Pixels	Landslide Pixels	% Landslide Pixels	FR
1.	Slope	0 -10°	10665	10.644	65	5.657	0.531
		10°- 20°	13653	13.626	124	10.792	0.792
		20°- 30°	18931	18.893	238	20.714	1.096
		30°- 40°	22010	21.966	279	24.282	1.105
		40°- 50°	19099	19.061	251	21.845	1.146
		50°- 60°	11635	11.612	145	12.620	1.086
		>60°	4206	4.198	47	4.091	0.974
Total			100199		1149		6.732
2.	Aspect	North	12605	12.580	173	15.057	1.196
		Northeast	18336	18.300	267	23.238	1.269
		East	14650	14.621	184	16.014	1.095
		Southeast	10965	10.943	93	8.094	0.739
		South	10230	10.210	72	6.266	0.613
		Southwest	12263	12.239	92	8.007	0.654
		West	12371	12.346	141	12.272	0.993
		Northwest	8779	8.762	127	11.053	1.261
Total			100199		1149		7.825
3.	Curvature	Concave	17874	17.451	262	22.802	1.306
		Flat	57552	56.192	645	56.136	0.999
		Convex	26995	26.357	242	21.062	0.799
Total			102421		1149		3.104
4.	Hill shade	0-69	10352	10.419	124	10.792	1.035
		69-117	17562	17.675	197	17.145	0.970
		117-161	23139	23.289	282	24.543	1.053
		161-205	24688	24.848	245	21.323	0.858
		205-254	23617	23.770	301	26.197	1.102
Total			99358		1149		5.019
5.	Relief (m)	1198-1641	18548	18.110	289	25.152	1.388
		1641-2084	24012	23.444	161	14.012	0.597
		2084-2528	22726	22.189	126	10.966	0.494
		2528-2971	23234	22.685	106	9.225	0.406
		2971-3415	13901	13.572	467	40.644	2.994
Total			102421		1149		5.882
6.	Geology	Kaplas Granite	44821	43.760	449	39.077	0.893
		Salkhala fm.	27363	26.715	353	30.722	1.15
		Vaikrita Grp.	30241	29.525	347	30.200	1.022
Total			102425		1149		3.065
7.	Distance to Streams (m)	0-100	10876	2.91	142	12.53	4.306
		100-200	15401	4.12	249	21.98	5.332
		200-500	23722	6.35	258	22.77	3.587
		500-800	25467	6.81	122	10.77	1.580
		800-9806	29827	79.81	362	31.95	0.400
Total			373744		1133		15.208
8.	LULC	Bare Ground	35875	1.00	13	1.13	1.136
		Built Area	32708	9.08	155	13.49	1.486
		Crops	52486	0.00	4	0.35	0
		Snow/Ice	60201	16.70	306	26.63	1.594
		Trees	1465	0.00	79	6.88	0
		Water	21142	58.66	592	51.52	0.878
Total			202412		1149		5.095
9.	Distance to Road (m)	0-150	20420	5.831	1116	99.288	17.026
		150-200	14468	4.131	8	0.711	0.172
		200-500	17096	4.882	0.00	0.00	0
		500-800	23669	6.759	0.00	0.00	0
		800-9928	27452	78.395	0.00	0.00	0
Total			350175		1124		17.198

Table 2. Table showing the percentage of area covered by each class by using landslide susceptibility zonation map

Class	Pixel Count	Area (in sq. km)	% age of area covered
Very Low	14764	44.19	42
Low	17319	24.66	23
Mode rate	20519	14.94	15
High	26292	11.52	12
Very High	20464	8.1	8
Total	99358	103.4 1	100

CONCLUSIONS

The Landslide Susceptibility Index was calculated in the current study using a GIS environment and nine conditioning parameters (slope, slope aspect, slope curvature, relief, hill shade, lithology, distance to river, distance to stream, and LULC). The model employed in this research will reasonably estimate the landslide susceptibility along the Bharderwah- Bani Road stretch. The main

FUNDING

This work did not receive any external funding.

CONFLICT OF INTEREST

The authors declare no conflict of interest.

REFERENCES

- Aleotti, P. and Chowdhury, R. (1999). Landslide hazard assessment: summary review and new perspectives. *Bulletin of Engineering Geology and the environment*, v. 58, pp. 21-44.
- Bhat, G.M., Pandita, S.K., Dhar, B.L., Sahni, A.K. and Haq, I.U. (2002). Preliminary geotechnical investigation of slope failures along Jammu-Srinagar national highway between Batote and Banihal. *Aspects of Geology Environment of the Himalaya*, pp. 275-288.
- Bonham-Carter, G. (1994). *Geographic information systems for geoscientists: modelling with GIS* (No. 13). Elsevier.
- Brabb, E.E., Colgan, J. and Best, T.C. (1999). Map showing inventory and regional susceptibility for Holocene debris flows and related fast moving landslides in the conterminous United States. U.S. Geological Survey Publication, Series number 2329.
- Buckley, A. (2010). Understanding curvature rasters, in imagery, mapping, mapping center lead. *ArcGIS Block*.
- Carrara, A., Cardinali, M., Detti, R., Guzzetti, F., Pasqui, V. and Reichenbach, P. (1991). GIS techniques and statistical models in evaluating landslide hazard. *Earth Surface Processes and Landforms*, v. 16(5), pp. 427-445.
- Cevik, E. and Topal, T. (2003). GIS-based landslide susceptibility mapping for a problematic segment of the natural gas pipeline, Hendek (Turkey). *Environmental Geology*, v. 44, pp. 949-962.
- Choudhary, J.B. (2006). Geotechnical and Structural evaluation of Tectonostratigraphic Units along Head Race Tunnel, Sewa Hydroelectric Project. Stage-II, Kathua District. Unpublished Ph.d thesis. University of Jammu, Jammu, India.

factors influencing the frequency of landslides have been identified as human activities, including an increase in built-up areas (roads and buildings) and agricultural practices having the greatest influence on steep slopes. Due to the burden of the expanding population, people have been compelled to concentrate their enterprises on high mountain slopes. In order to safeguard people and property against landslides, the susceptibility maps may be used as key instruments in the planning and management of upcoming development projects in this area. While the low susceptibility zones are often safe for the construction of infrastructure, the high and very high susceptibility zones require extra engineering, geological, and geotechnical considerations.

ACKNOWLEDGEMENTS

We are grateful to the Department of Geology at the University of Jammu for their support, and the reviewers for their valuable comments, which helped to improve our presentation.

- Dai, F.C., Lee, C.F., Li, J. X.Z.W. and Xu, Z.W. (2001). Assessment of landslide susceptibility on the natural terrain of Lantau Island, Hong Kong. *Environmental Geology*, v. 40, pp. 381-391.
- Fuchs, G. (1975). Contributions to the Geology of the North-Western Himalayas. *Abhandlungen der Geologischen Bundesanstalt*, 66 Figures and 5 Plates, v. 32, pp. 1-65.
- Gansser, A. (1981). The geodynamic history of the Himalaya. *Zagros Hindu Kush Himalaya Geodynamic Evolution*, v. 3, pp. 111-121.
- Girma, F., Raghuvanshi, T.K., Ayenew, T. and Hailemariam, T. (2015). Landslide hazard zonation in Ada Berga district, central Ethiopia – A GIS based statistical approach. *Journal of Geomatics*, 9(1), pp. 25-38.
- Guzzetti, F., Reichenbach, P., Cardinali, M., Ardizzone, F. and Galli, M. (2003). The impact of landslides in the Umbria region, central Italy. *Natural Hazards and Earth System Sciences*, v. 3(5), pp. 469-486.
- Guzzetti, F., Reichenbach, P., Cardinali, M., Galli, M. and Ardizzone, F. (2005). Probabilistic landslide hazard assessment at the basin scale. *Geomorphology*, v. 72(1-4), pp. 272-299.
- Lee, S. A.R.O. (2005). Application of logistic regression model and its validation for landslide susceptibility mapping using GIS and remote sensing data. *International Journal of Remote Sensing*, v. 26(7), pp. 1477-1491.
- Lee, S. and Pradhan, B. (2006). Probabilistic landslide hazards and risk mapping on Penang Island, Malaysia. *Journal of Earth System Science*, v. 115, pp. 661-672.
- Lee, S. and Pradhan, B. (2007). Landslide hazard mapping at Selangor, Malaysia using frequency ratio and logistic regression models. *Landslides*, v. 4(1), pp. 33-41.
- Lee, S. and Talib, J.A. (2005). Probabilistic landslide susceptibility and factor effect analysis. *Environmental Geology*, v. 47, pp. 982-990.
- McMohan, C.A. (1885). Some further notes on the geology of parts of Chamba. *Records Geological Survey of India*, v. 18, pp. 35-78.
- Petley, D.N. (2008). The global occurrence of fatal landslides in 2007. In *Geophysical Research Abstracts*, vol. 10, pp. 3.
- Pham, B.T., Tien Bui, D. and Prakash, I. (2018). Application of classification and regression trees for spatial prediction of rainfall-induced shallow landslides in the Uttarakhand area (India) using GIS. *Climate Change, Extreme Events and Disaster Risk Reduction: Towards Sustainable Development Goals*, pp. 159-170.
- Poudel, K. and Regmi, A.D. (2016). Landslide susceptibility mapping along Tulsipur-Kapurkot road section and its surrounding region using bivariate statistical model. *Journal of Nepal Geological Society*, v. 50(1), pp. 83-93.
- Siddle, H.J., Jones, D.B. and Payne, H.R. (1991). Development of a methodology for landslide potential mapping in the Rhondda Valley. In *Slope stability engineering developments and applications: Proceedings of the international conference on slope stability organized by the Institution of Civil Engineers and held on the Isle of Wight on 15–18 April 1991*. Thomas Telford Publishing, pp. 137-142.
- Singh, Y. and Bhat, G.M. (2010). Role of basin morphometric parameters in landslides along the national highway-1A between Udhampur and Batote, Jammu and Kashmir, India: a case Study. *Himalayan Geology*, v. 31(1), pp. 43-50.
- Singh, Y. and Bhat, G.M. (2011). Landslide investigations: Morphometric and Geotechnical Approach - a case study from Northwest Himalaya, India. LAP Lambert Academic Publications. P. 112, ISBN-10: 9783844301502.
- Singh, Y., Bhat, G. M., Sharma, V., Pandita, S. K. and Thakur, K.K. (2012). Reservoir induced landslide at Assar, Jammu and Kashmir: a case study. *Journal of the Geological Society of India*, v. 80, pp. 435-439.
- Singh, Y., Sharma, V., Pandita, S.K., Bhat, G.M., Thakur, K.K. and Kotwal, S.S. (2014). Investigation of landslide at Sangaldan near tunnel-47, on Katra-Qazigund railway track, Jammu and Kashmir. *Journal of the Geological Society of India*, v. 84, pp. 686-692.
- Soeters, R. and Van Westen, C.J. (1996). Slope instability recognition, analysis and zonation. *Landslides: Investigation and Mitigation*, v. 247, pp. 129-177
- Thakur, V.C. (1981). Regional framework and geodynamic evolution of the Indus-Tsangpo suture zone in the Ladakh Himalayas. *Earth and Environmental Science Transactions of The Royal Society of Edinburgh*, v. 72(2), pp. 89-97.
- Van Westen, C.J., Van Asch, T.W. and Soeters, R. (2006). Landslide hazard and risk zonation—why is it still so difficult? *Bulletin of Engineering geology and the Environment*, v. 65, pp. 167-184.
- van Westen, C.J., Castellanos, E. and Kuriakose, S.L. (2008). Spatial data for landslide susceptibility, hazard, and vulnerability assessment: An overview. *Engineering Geology*, v. 102(3-4), pp. 112-131.
- Varnes, D.J. (1984). Landslide hazard zonation: a review of principles and practice (No. 3).